

UCLA

David Geffen School of Medicine

DEPARTMENT OF EMERGENCY MEDICINE

CENTER FOR PREHOSPITAL CARE



2020-2021
ANNUAL REPORT

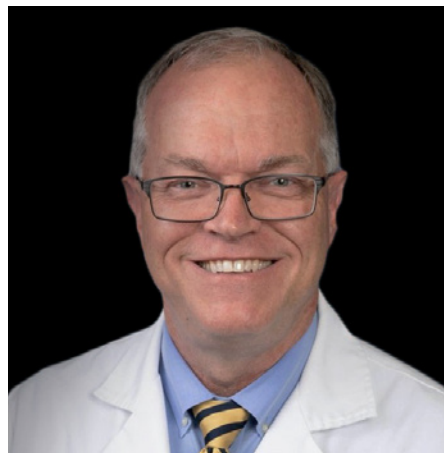
MISSION: TO INSPIRE HEALING HUMANKIND THROUGH INNOVATION AND WORLD-CLASS EDUCATION

VALUES: DO WHAT'S RIGHT, MAKE THINGS BETTER, BE KIND



UCLA DEPARTMENT OF EMERGENCY MEDICINE

LETTER FROM THE CHAIR



Over the past 5 years as the inaugural chair of the Department of Emergency Medicine at UCLA, I have had the honor and privilege of seeing the exceptional work of our Center for Prehospital Care. This very committed group of faculty and staff have extended UCLA's footprint into prehospital and clinical settings, ensuring that the very best patient care is delivered long before these patients are ever transported to UCLA and other hospitals in the greater Los Angeles community.

Serving over 12,000 students each year, including UCLA nurses, medical students, house staff and faculty physicians, the Center is integral to helping UCLA deliver cutting-edge medicine, one patient at a time. Their work with fire departments and law enforcement agencies expands the community partnerships of UCLA Health and the David Geffen School of Medicine. This educational outreach furthers the impact of our collective work in emergency medicine as we extend our expertise into our local communities.

We hope that this report provides our stakeholders with background on our important work, program outcomes and commitments.

GREGORY W. HENDEY, MD, FACEP
Professor and Chair

CONTENTS

Cover	1
Letter from Chair	3
Table of Contents	4
Letter from Founders	5
The UCLA Center for Prehospital Care	6
Awards & Distinctions	8
Educational Areas	
American Heart Association Community Training Center	9
Emergency Medical Technician Education	10
Fire Department & Law Enforcement Continuing Education & Quality Improvement Services	11
Paramedic Education	12
Phlebotomy Education	13
Clients & Affiliates	14
Research	16
Prehospital Care Research Forum at UCLA	17
Leadership, Faculty and Staff	18

LETTER FROM THE FOUNDING DIRECTOR AND EXECUTIVE DIRECTOR



Since its inception in 1987, the Center for Prehospital Care has furthered all three legs of the University of California's tripartite mission of teaching, research, and service, as well as all four pillars of the UCLA David Geffen School of Medicine's strategic plan – education, research, community engagement and clinical care. Over 35 years of self-supporting service, the Center has become the premier education institution in the field of prehospital emergency care.

Not only is the Center lauded locally, nationally and internationally for its education programs, the Center actively conducts pilots and evaluation projects, mentors and trains professionals to perform research that examines best practices in education and prehospital clinical medicine, and advances improvements within the emergency 9-1-1 system. As of 2022, faculty and staff have educated tens of thousands of UCLA Health and David Geffen School of Medicine physicians, nurses and prehospital providers.

The COVID-19 era has been extraordinary and unprecedented. The ongoing and increasing demand to safely deliver essential workforce education to UCLA Health employees and our greater community brought out the very best in our program and faculty. Center faculty work tirelessly to develop and deliver innovative teaching formats, share UCLA's best educational practices around the nation, and continue to help build the body of evidence that examines prehospital medicine.

We are grateful to Drs. Atilla Uner, Tabitha Cheng, and Steven Rottman, for their role as medical directors for the Center, their ongoing contribution to emergency medical services, and partnership and commitment to forwarding the mission of the Center. There is still much to do in continuing our unwavering commitment to building evidenced-based practices and delivering the best prehospital care education in our nation. We look forward to providing ongoing reports on our progress in this important work.

BAXTER LARMON, PHD, M.I.C.P.
Founding Director
Professor of Emergency Medicine

TODD LEGASSICK, MPH
Executive Director

THE UCLA CENTER FOR PREHOSPITAL CARE



INTRODUCTION

Since its formation in 1987 under visionary founding director and UCLA David Geffen School of Medicine professor, Dr. Baxter Larmon, and Todd LeGassick, Executive Director, the UCLA Center for Prehospital Care has been the leading prehospital education and research center in the nation. Operating under the auspices of Dr. Gregory Hendey, Chair of the Department of Emergency Medicine in the UCLA David Geffen School of Medicine, the Center's mission is to create the fund of knowledge for the practice of prehospital medicine and make a local, national and international impact through education to the providers and the patients they serve.

Within this center of excellence, faculty and staff play a pivotal role as thought leaders in the ongoing development of emergency medical services. Faculty speak and teach nationally and internationally to share UCLA best practices and to consult on all major developments in the prehospital care profession, including standardizing curricula, national priority agendas, evidence-based practice, and regulations.

In service to the UCLA David Geffen School of Medicine's core mission of education, research, clinical care and community engagement, each year over 150 full and part-time program faculty, clinical instructors and staff, serve over 12,000 students in 800 courses which boast some of the best completion, certifying and licensing rates in the nation.

The Center provides indispensable support to UCLA Health's workforce by orchestrating and delivering high quality education to meet institutional requirements for basic, advanced, and pediatric life support, neonatal resuscitation and non-violent crisis prevention training for medical students, residents, nurses and physicians. Each year, over 6,000 UCLA Health and David Geffen School of Medicine providers attend over 450 required courses to ensure compliance with accreditation and the ongoing delivery of cutting-edge medicine.

Locally, the Center has 23 education and quality improvement service agreements with local municipalities on behalf of their fire and police departments and 72 affiliation agreements that allow UCLA to train, certify and recertify the EMTs and Paramedics transporting patients to UCLA Health emergency departments as well as those throughout Los Angeles. These primary education programs are critical to the stability of the first responder safety net and community engagement, which also includes performance improvement across the broader 9-1-1 system and EMS providers in cooperation with the Los Angeles County's Department of Health Services Emergency Medical Services Agency.

HIGHLIGHTS

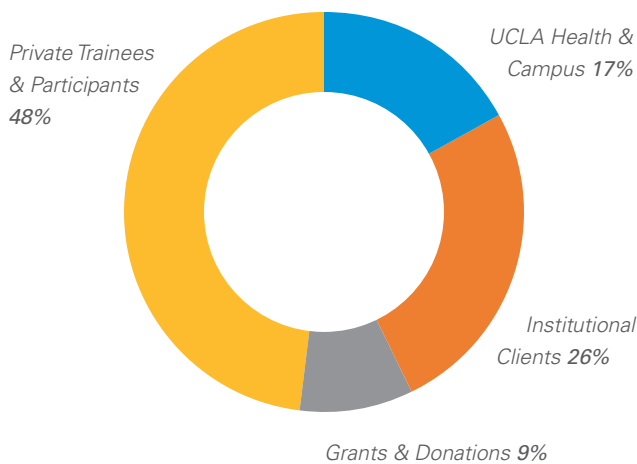
- From the outset of the pandemic, faculty and staff designed and implemented innovative educational solutions to enable safe and effective training of front line healthcare workers
- Center faculty lent clinical and operational expertise by collaborating with first responder agencies to train their staff in vaccination administration and by developing pop-up COVID-19 vaccination clinics for the healthcare workforce
- Center faculty assisted the State of California in developing educational standards for mobile integrated healthcare
- Center programs boast some of the highest pass rates on national and state board examinations
- Center faculty provided instruction to medical students during Basecamp orientation, through Early Authentic Clinical Experiences at Center affiliated fire departments and taught blood draws to third year students
- Extramural funding of over \$500,000 was received to incorporate simulation and online learning modules into the Los Angeles County Trauma System
- Over \$62,000 in scholarships was awarded to students based on merit and need made possible by generous philanthropic gifts from the families and friends of the Tom W. Olofson Fund, Mitch Sekine Scholarship Fund, Derrick Schiller Fund, Marshall T. Morgan Scholarship Fund, and Ryan Sorek Scholarship Fund

- The Center was an early adopter of the EDI initiative and in collaboration with an EDI consultant from UCLA Health, assembled an Equity, Diversity and Inclusion Committee to identify training opportunities for faculty and staff, improvements to guide curriculum, and data to drive change
- Center leadership embraced Cultural North Star values, and in collaboration with the Dean's Office, delivered development opportunities for faculty and staff to formally adopt its pillars - Do What's Right, Make Things Better and Be Kind

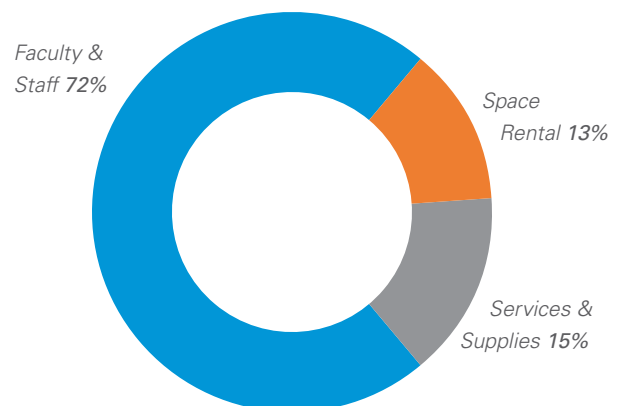
FINANCIAL SUMMARY

The Center for Prehospital Care has been a self-supporting center of excellence since its inception and has managed a balanced fund year after year. Sources supporting the Center include course fees approved by the Dean's Office and UCLA Business & Financial Solutions obtained from private trainees and institutional clients such as fire departments, law enforcement agencies, hospitals and clinics, UCLA Health, David Geffen School of Medicine and Campus entities, as well as grants and philanthropic donations. The income generated from the Center's activities supports all of the expense and internal administrative overhead associated with educational operations. Center expenditures are appreciably attributed to salaries and benefits as well as space rentals to operate programs.

FUNDING SOURCES, FY21



EXPENDITURES, FY21



AWARDS & DISTINCTIONS



Dr. Atilla Uner was elected as the chair for the California EMS Authority's Commission on EMS, appointed as the Pacific

Region Medical Director for Global Medical Response and received the Key Contact and EMS Achievement Awards from the California Chapter of the American College of Emergency Physicians



Dr. Baxter Larmon received the National Association of EMTs Presidential Award for his leadership and commitment with the EMS Lighthouse

Leadership Committee to develop the national EMS mentorship program



Michael Kaduce was named the National Association of Emergency Medical Technicians (NAEMT) Education Coordinator for

Southern California, received the NAEMT Education Service Award for outstanding service to the profession of EMS education, and received the Best Oral Presentation at the International Scientific Symposium at the EMS World Conference in October 2021 for his work evaluating the impact of emergency orders on EMT completion rates

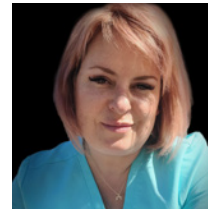


Marianne Newby, Nurse Educator and Fire Department & Law Enforcement Division Director, received the Distinguished

Service Award from City of Glendale on behalf of their Police Department



Dr. Tabitha Cheng assumes the role of medical director for Burbank Fire Department after 41 years of service by Dr. Steven Rottman



Johnna Corbett, Nurse Educator, was honored at the City of West Covina Fire Department Award Ceremony as Civilian Employee of the Year



Nurse Educators **Aspen Diloli**, **Kristina Hong**, **Adrienne Roel**, **Johnna Corbett** and **Marianne Newby**, were recognized by local fire chiefs for their support in developing and implementing COVID-19 vaccination clinics, which aided in vaccinating hundreds of first responder fire and police personnel



Anthony Keehne and **Todd LeGassick** received the Cultural North Star Award from the UCLA David Geffen School of Medicine. **Julie**

Daniels, **Claudia DelToro**, **Michael Kaduce**, and **Edward Oliphant** received Cultural North Star Nominations

AMERICAN HEART ASSOCIATION COMMUNITY TRAINING CENTER

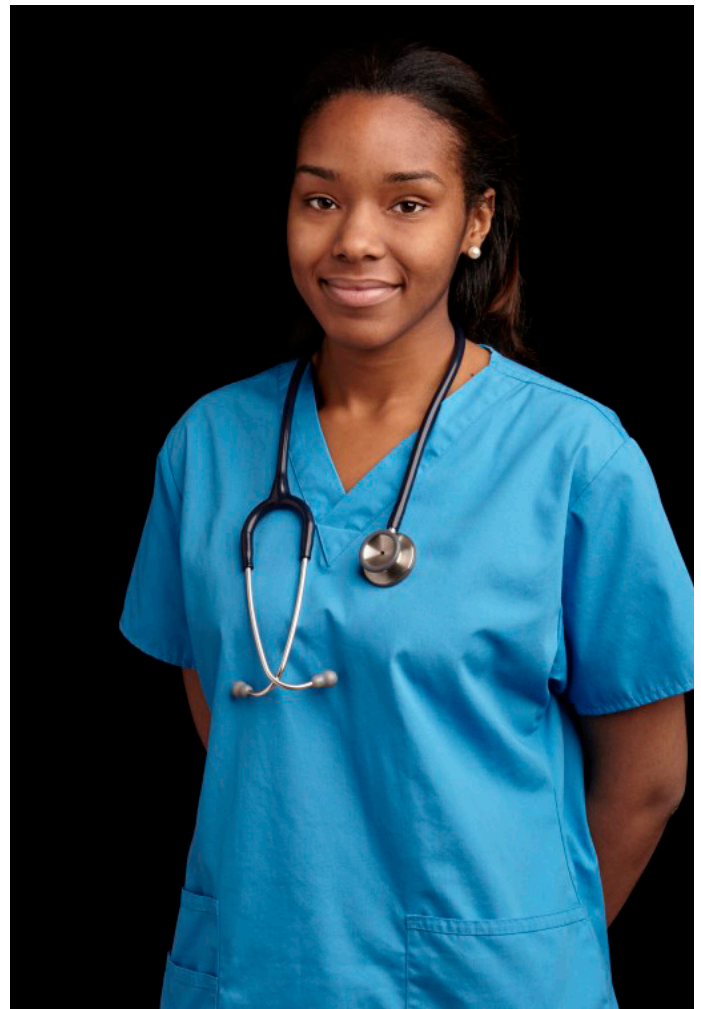
For over 30 years, the UCLA Community Training Center has been accredited by the American Heart Association and provides emergency cardiac life support education to UCLA Health nurses, medical and dental students, residents and physicians. Each year over 6,000 providers complete over 450 required continuing education courses in basic, advanced, and pediatric life support, neonatal resuscitation and non-violent crisis prevention training to meet accreditation requirements, ensuring that UCLA's workforce can continue to deliver compassionate, leading edge medical care to patients.

“Along with providing excellent services and support to our staff, the UCLA Center for Prehospital Care has been instrumental in the development of essential skills for our staff so they can deliver nursing excellence”

LEE GALUSKA, PHD, RN, NE-BC, EXECUTIVE DIRECTOR,
NURSING PRACTICE, EDUCATION AND RESEARCH, UCLA HEALTH

HIGHLIGHTS:

- 100% of UCLA Health providers who have completed Community Training Center courses rate them as excellent or good
- The Community Training Center developed innovative hybrid courses which allowed the ongoing delivery of required workforce education courses to UCLA Health during the pandemic
- The Community Training Center conducted over 13,000 hours of continuing education across all programs to support the re-licensure of EMTs, paramedics and registered nurses, paramedics and EMTs
- To meet the priorities of UCLA Health Nursing, the Community Training Center provided Non-Violent Crisis Prevention Training for all UCLA nurses, saving millions of dollars in training costs



“Flexible course schedules allow us to meet clinical operational needs with complete confidence in the quality of instruction”

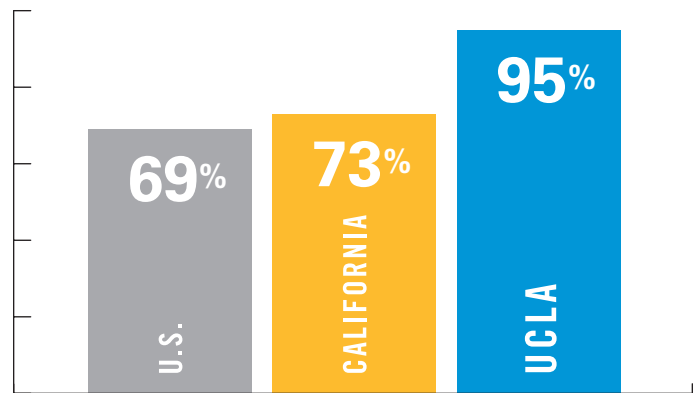
LISA PAYNE, DIRECTOR,
GRADUATE MEDICAL EDUCATION, DGSOM/UCLA HEALTH

EMERGENCY MEDICAL TECHNICIAN EDUCATION

Since 1979, the UCLA Emergency Medical Technician (EMT) program has been one of the top performing and the largest non-military training programs in the United States. Each year, over 2,000 students are served in primary, refresher and preparatory programs. These first responders are the backbone of the 9-1-1 emergency safety net and work for fire departments, law enforcement agencies and ambulance companies. The Center's dedicated faculty deliver innovative education in accessible formats to offer students a progression from preparatory education to primary course work in hybrid formats to refresher courses in-person.

HIGHLIGHTS:

- The UCLA EMT program boasts a first-time pass rate of 95% on the national certifying examination, as compared to the State of California of 73% and the national pass rate of 69%.
- Program faculty were recognized in the cover story in the EMS World Journal in November 2020 for their innovative work and creative educational solutions during the COVID-19 pandemic
- Program faculty delivered national seminars to support the need for ongoing education of the EMS workforce during the pandemic, including: "Innovations in EMS Education"; "How to Maintain Educational Continuity During the COVID-19 Pandemic"; and "EMS Education: Going Virtual"
- Expanded satellite programming used online and hybrid formats for students throughout the state and even worldwide, including Marin County in Northern California, the University of Southern California, Mexico and the United Arab Emirates
- Received a \$280,000 grant from the Los Angeles County Department of Health Services EMS Agency for online educational modules to advance best practices in the LA County EMS and trauma system
- EMT program faculty developed an emergency medical services education day for medical students as part of the new medical school curricula redesign, which received the highest marks of any one-day orientation activity on medical student surveys



EMT first-attempt pass rate on certification examination



“UCLA’s EMT program is simply the best in Southern California”

SGT. SHARON KIM, GLENDALE POLICE DEPARTMENT

FIRE DEPARTMENT & LAW ENFORCEMENT CONTINUING EDUCATION & QUALITY IMPROVEMENT SERVICES

For over 20 years, UCLA has partnered with fire departments and law enforcement agencies to deliver customized, comprehensive, dedicated, state-of-the-art continuing education, and quality improvement services. This team of highly specialized, educated, and experienced mobile intensive care nurses and paramedics deliver customized education to nearly 1,000 first responders working in neighboring fire and police departments to enhance the care they deliver on over 62,000 9-1-1 emergency medical aid responses each year covering over 1.8 million citizens.

“UCLA Nurse Educators are outstanding and the best in the business”

CHIEF MIKE LANG, MANHATTAN BEACH FIRE DEPARTMENT

HIGHLIGHTS:

- This division holds 18 service agreements with fire departments throughout Los Angeles County, one 9-1-1 caller receiving center, three law enforcement agencies, and one community college
- Center faculty oversee UCLA Emergency Medical Services which provides 9-1-1 response on the UCLA campus and are medically responsible for 65+ automated external defibrillators on campus
- Each year over 200 customized courses are delivered to partner departments
- Nurse educators developed and implemented COVID-19 vaccination clinics, including obtaining approval for paramedics and EMTs to deliver immunizations under an optional scope of practice. This effort aided in vaccinating hundreds of first responder fire and police personnel

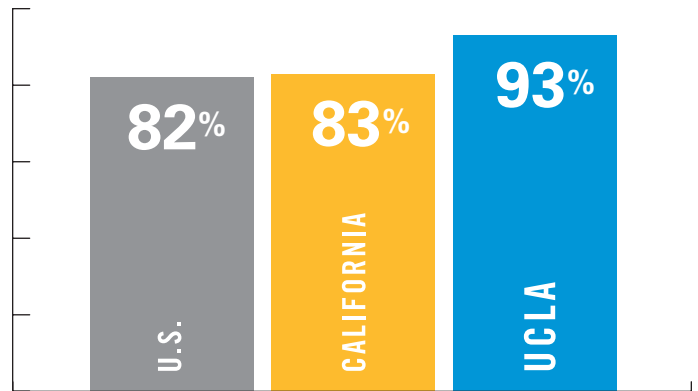


Adrienne Roel, UCLA Fire Department Nurse serves Culver City and El Segundo Fire Departments

PARAMEDIC EDUCATION

Established in 1972, the UCLA Paramedic Program is the first nationally accredited program in the nation and one of the largest non-military training programs in the US. This premier program is the preferred educational institution for all major fire departments in the counties of Los Angeles, Orange, Santa Barbara and Ventura, to train firefighters and first responders as licensed paramedics.

A team of talented and committed faculty deliver innovative instruction in student-centered formats through primary, refresher and preparatory programs serving over 500 students each year. It is the preferred educational institute of most fire departments and law enforcement agencies in Southern California.



Paramedic first-attempt licensing rate

HIGHLIGHTS:

- The program boasts a licensing rate of 93%, compared to California at 83% and a national pass rate of 82%
- Significant operational enhancements improved working conditions for program faculty and learning outcomes for students, including:
 - » Implemented virtual office hours to provide students access to faculty outside of regularly scheduled class times on evenings and weekends
 - » Teaching workload was re-distributed between full-time and part-time faculty to create more consistency and a subsequent positive impact on operating expenses
 - » Inventory and ordering process for equipment and medical supplies were streamlined, reducing redundancy and overstock in ordering
 - » Increased clinical skills laboratory and simulation time to permit students to have ample time to practice with an instructor to achieve competency.
- Program faculty hosted the Department of Emergency Medicine residents for a simulation day as part of residents' emergency medical services rotation
- Received \$305,000 grant from the Los Angeles County Department of Health Services EMS Agency for the development of a Trauma Simulation Program and Immersive Laboratory to forward the development of the LA County EMS and Trauma System

UCLA is one of the preferred paramedic educational partners for Los Angeles City Fire, Los Angeles County Fire, Santa Barbara County Fire and Ventura County Fire Departments



PHLEBOTOMY EDUCATION

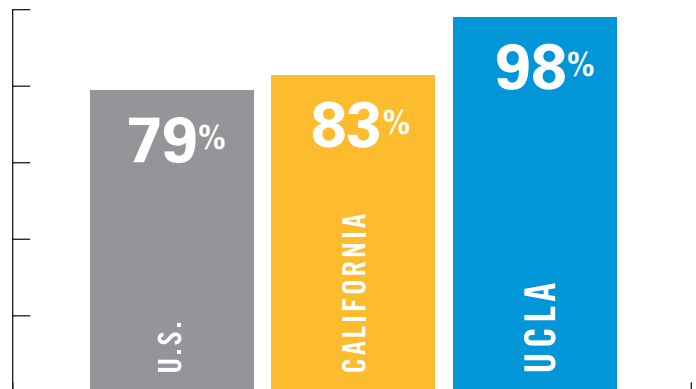
The UCLA Phlebotomy Program was established in 2002 and born out of the need to prepare EMTs to work at UCLA Health and other local emergency departments. The Phlebotomy Program has continued to serve as a vital workforce solution for clinical laboratories throughout Southern California. Program faculty apply the same student-centered and evidence-based philosophy in other Center programs, serving over 350 students each year in primary and preparatory courses.

“UCLA students are well-prepared, professional, and eager to be a part of the patient care team. The training is nothing less than superb and UCLA Health hires many of the program graduates”

ODEH EL-HAMARNEH, CLS, MT, ASCP, SENIOR SUPERVISOR,
UCLA PATHOLOGY & LABORATORY MEDICINE

HIGHLIGHTS:

- The Phlebotomy program boasts a 98% licensing rate on the state board examination for students who have completed the program compared to California at 83% and a national pass rate of 79%
- During the pandemic, the Phlebotomy program was the first of its kind to be approved for an online/hybrid format by the California Department of Public Health, Laboratory Field Services and UCLA's curriculum was used as the model for all other programs in the State of California
- Program faculty trained third year medical students on blood draw techniques as part of their transition to clerkship
- Student graduates served the local community by assisting at local free clinics and COVID-19 testing sites



Phlebotomy state board examination licensing rate

“Supportive to students with well-organized content to promote student success. This program provides well-prepared applicants for employment”

JOSE ESTRADA, LABORATORY MANAGER, ADVENTIST HEALTH
WHITE MEMORIAL MEDICAL CENTER AND FORMER UCLA
PHLEBOTOMY PROGRAM GRADUATE

CLIENTS & AFFILIATES

The Center serves fire departments, law enforcement agencies, ambulance companies, and hospitals throughout Southern California. This broad network of community partners permits the Center to fulfill the mission of impacting prehospital medicine and the patients served.

UCLA

UCLA Health

Ambulatory Care & Primary Medical Offices
Department of Anesthesiology
Department of Emergency Medicine
Department of Medicine
Department of Ophthalmology
Department of Pathology
Department of Pediatrics
Department of Pharmacy

Department of Radiology
Department of Respiratory Care
Department of Speech & Audiology
Information Technology
Nursing Education & Excellence
Office of Community Engagement
Patient Transport
Security

UCLA School of Dentistry

UCLA School of Medicine

UCLA Campus

Ashe Student Health Center
Police Department and Campus EMS
Student Welfare Commission
Environment, Health & Safety

FIRE DEPARTMENT, LAW ENFORCEMENT AGENCIES & AMBULANCE COMPANIES

Alhambra Fire Department
Ambulnz Health Ambulance
Ambuserve Ambulance
American Professional Ambulance
American Medical Response
Arcadia Fire Department
Burbank Fire Department
Burbank Airport Fire Department
Chevron Refinery Fire Department
City of Orange Fire Department
Care Ambulance Service
Compton Fire Department
Costa Mesa Fire & Rescue
Culver City Fire Department
Downey Fire Department
El Segundo Fire Department
Glendale Fire Department
Glendale Police Department
Hall Ambulance

Hawthorne Police Department
Jet Propulsion Laboratory Fire Department
La Habra Heights Fire Department
LAFD Air Operations
Long Beach Fire Department
Los Angeles City Fire Department
Los Angeles Police Department
Los Angeles County Fire Department
Los Angeles County Sheriff's Department
Manhattan Beach Fire Department
Manhattan Beach Police Department
Marin County Fire Department
MedCoast Ambulance Service
Medic-1 Rescue Services International
Monrovia Fire Department
Montebello Fire Department
Monterey Park Fire Department
Newport Fire Department
Orange County Fire Authority

Oxnard Fire Department
Pasadena Fire Department
PRN Ambulance
Redondo Beach Fire Department
Riverside County Fire Department
San Bernardino County Fire District
San Gabriel Fire Department
San Marino Fire Department
Santa Barbara County Fire Department
Santa Cruz Fire Department
Santa Fe Springs Fire Department
Santa Monica Fire Department
Sierra Madre Fire Department
South Pasadena Fire Department
Stinson Beach Fire Department
Toluca Lake Fire Department
Torrance Fire Department
Ventura County Fire Protection District
West Covina Fire Department

HOSPITALS & CLINICS

Adventist White Memorial Medical Center
 Antelope Valley Hospital
 Cedar Sinai Medical Center
 Center for Family Health and Education
 Charles Drew University of Medicine & Science
 Children’s Hospital Los Angeles

Dignity Health System
 Glendale Adventist Medical Center
 Hollywood Sunset Free Clinic
 Huntington Memorial Hospital
 Kaiser Los Angeles
 Long Beach Memorial Hospital

Methodist Hospital
 Northridge Hospital Medical Center
 Premier Health Partners of Santa Monica
 Priority Care Medical Group
 Providence Health System
 Torrance Memorial Medical Center



RESEARCH

To fulfill the mission of the Center for Prehospital Care, David Geffen School of Medicine and UCLA, program faculty and staff use the incredible pool of student data collected through education programs and clinical affiliates to build the body of evidence to advance both the educational and clinical practice of this still nascent discipline of prehospital medicine.

PEER REVIEWED ABSTRACTS

Building in Bias: Disparities in Paramedic Simulation Training. Authors: Sarah Ashton, EMT; Jackson D. Déziel, PhD, MPA, NRP; Frank Strange, MEd, NRP; Pauline Convocar MD, MCHM FPCEM, DPCOM; Sahaj Khalsa BS, NRP; Christopher Kroboth, MS, NRP; Kathleen O'Connor, MPP, NRP; Edward Oliphant, BA, NRP; William F. Toon, Ed, NRP. Published in EMS World Fall 2021; Oral and Poster Presentations at the International Scientific Symposium, Atlanta, Georgia, October 2021. To be presented at the International Meeting on Simulation in Healthcare, Los Angeles, January 2022.

A Comparison of Emergency Changes to Educational Delivery Methods Due to the COVID-19 Pandemic on Emergency Medical Technician (EMT) Student Course Completion Rates. Authors: Michael Kaduce, MPS, NRP, Jeffrey Rollman, MPH, NRP, Em Cyr, BS, EMT, Anthony Keehne, BA, NRP, Ryan Ockey, BS, NRP, Lena Wolter, MA, NREMT. Published in EMS World Fall 2021; Oral and Poster Presentations at the International Scientific Symposium, Atlanta, Georgia, October 2021.

A Comparison of Emergency Changes to Education Delivery Methods Due to the COVID-19 Pandemic Emergency Medical Technician (EMT) Student Unit Exam Scores. Authors: Michael Kaduce, MPS, NRP, Jeffrey Rollman, MPH, NRP, Em Cyr, BS, EMT, Anthony Keehne, BA, NRP, Ryan Ockey, BS, NRP, Lena Wolter, MA, NREMT. Published in EMS World Fall 2021; Poster Presentation at the International Scientific Symposium, Atlanta, Georgia, October 2021.

A Comparison of Performance Evaluation Standards of English and Spanish Prehospital Entry-Level EMT Cognitive Examinations. Authors: Luis M. Pinet-Peralta, PhD, MS, Jessie M. Castillo, NRP, David J. Olvera BA, EMT-P, FP-C, Hlee Yang, MPH, Elkin Fuentes RN, David Page MS, NRP, Remle P. Crowe, PhD, NREMT. Published in EMS World Fall 2021, poster presentation EMS Expo in Atlanta Georgia, October 2021 and accepted for a poster presentation at National Association of EMS Physicians in San Diego, January 2022.

Emergency Medical Technician Training: A Mexico-USA Comparison. Authors: Alfonso Salas MsNR, BsPT, EMTP; Gabriel Barrera MEd, EMT; Andrés Quintero-Leyra MD, EMTP; Marisol Roldán BsPsych, EMT; Michael Kaduce MPS, NRP; Jessie Castillo NRP; David Page MS, NRP. Published in EMS World Fall 2021, poster presentation EMS Expo in Atlanta Georgia, October 2021.

EMT Skill Videos: Gimmick or Gain? Author: Michael Kaduce. Published in EMS World Fall 2020; Oral and Poster Presentations at the International Scientific Virtual Symposium, September 2020.

PEER REVIEWED MANUSCRIPTS

Chest Compression Fraction Alone does not Adequately Measure Cardiopulmonary Resuscitation Quality in Out-of-Hospital Cardiac Arrest. Authors: Angie Loza-Gomez A MD, Megan Johnson MD, Marianne Newby, RN, Todd LeGassick, MPH, Baxter Larmon, PhD, MICP. Abstract presented at the Society for Academic Emergency Medicine January 2020 and accepted for publication in the Journal of Emergency Medicine October 2021.

PREHOSPITAL CARE RESEARCH FORUM AT UCLA

The Prehospital Care Research Forum was established in 1992 to promote, educate and disseminate prehospital research at all provider levels. Operating as a support group under The UCLA Foundation, this volunteer group of respected members of the national and international emergency medical services research community advances evidence-based practices and research through mentorship, research workshops, podcasts, and international collaboration.

HIGHLIGHTS:

- Published and supported the presentation of over 400 original research studies and receipt of over \$750,000 in donations to support this important effort since its inception
- Accepted and peer-reviewed clinical and educational research studies for presentation at the EMS World Expo September 2020 (virtually), the International Scientific Symposium November 2021 (virtually) and in-person in Atlanta, Georgia in September 2021
- Participated in the first-ever global collaboration of research in EMS at the International Research Conference 2021 with the United Kingdom and the Australia's Colleges for Paramedicine in November 2021
- Delivered 24 podcasts with over 500 followers on clinical and educational prehospital care research topics for a national and international audience



Authors gather for Abstract Showcase at the International Scientific Symposium at the EMS World Conference in Atlanta, Georgia

LEADERSHIP, FACULTY AND STAFF

Gregory Hendey, MD

Chair, Department of Emergency Medicine

Bonnie Cheung

Chief Administrative Officer, Department of Emergency Medicine

Tabitha Cheng, MD

Associate Medical Director, Center for Prehospital Care

Baxter Larmon, PhD, MICP

Founding Director, Center for Prehospital Care

Todd LeGassick, MPH

Executive Director, Center for Prehospital Care

Steven Rottman, MD

Medical Director Emeritus, Center for Prehospital Care

Atilla Uner, MD

Medical Director, Center for Prehospital Care

Jenny Chang, BS

Director of American Heart Association Training & Continuing Education Programs

Claudia Del Toro, PA, MMS

Director of Phlebotomy Programs

David Filipp, MS, NRP

Director of Paramedic Programs

Michael Kaduce, MPS, NRP

Director of EMT Programs

Carmina Lu, MPA, MHA

Center Administrator

James MacCurdy, MBA

Director of Financial & Information Services

Marianne Newby, RN, BSN

Director of Fire Department & Law Enforcement Continuing Education & Quality Improvement Programs

David Page, MS, NRP

Director of the Prehospital Care Research Forum

Johnna Corbett, BS, RN, MICN, CEN
Nurse Educator

Em Cyr, BS, NREMT
Program Faculty

Elizabeth Cundiff, BA
Administrative Specialist

Darlene Karim, BA
Records & Registration Manager

Anthony Keehne, BA, NRP
Program Faculty

Mark Malonzo, MA, NRP, NCEE
Educator & Instructional Designer

Colin Newlin, BS, NRP, FP-C, CCP-P
Program Faculty

Ryan Ockey, BS, NRP
Program Faculty

Edward Oliphant, BA, NRP
Program Faculty

Jeremy Pierce, BA
Office Manager

Adrienne Roel, RN, BSN, MICN
Nurse Educator

David Skibo, BFA
Director of Personnel & Payroll

Cody Smith
Operations Manager

Michelle Torres, EMT-P
Program Coordinator

Stephen Ulrich, BS, NRP
Program Faculty

Lena Wolter, MA, NREMT
Program Faculty

*Our sincere and heartfelt thanks to all our clinical instructors and preceptors.
We are grateful for all you do for our students and support of our mission*

